

# LAMP PUMPED LASER HEADS

High performance and reliability



**Part No: CHBAALS35S**

**LASER SYSTEMS:** Alpha 35S, SL50, SL50P, Siro ALS35S, Thunder, Thunderstorm, 80 Joules.

**DESCRIPTION:** Single-Lamp Pumped pulsed Solid-State Laser Chamber used for spot welding.

**ASSEMBLIES:**

REFERENCE	PART NUMBER	DESCRIPTION
1	ORKALS35	O-Ring Kit
2	GCALS35S	Gold Cavity Assembly, Complete
3	BAALS35S	Head Block Assembly (Less Cavity, YAG Rod & Lamp)
4	HBAALS35S	Head Block Assembly (Less YAG Rod & Lamp)
5	CHBAALS35S	Head Block Assembly, Complete

# Part No: CHBAALS35S

## LASER HEAD COMPONENTS:

REFERENCE	PART NUMBER	DESCRIPTION
1	UHBALS35S	Upper Head Block
2	GCEALS35S	Cavity Ellipse, Gold
3	CEPALS35ST	Cavity End Plate, Teflon
4	LLK394	Flash lamp, Krypton
5	FGALS35SP	Flow Plate
6	YRA254	YAG Rod Assembly, Mounted
7	YR254	YAG Rod, 6.35 mm Unmounted
8	ORT250	O-ring, Teflon
9	YRH812	YAG Rod Holder
10	ORS1043	O-Ring, Silicone
11	LPPALS35S	Lamp Pressure Plate
12	RECAL35S	Rod End Cap
13	LHBALS35S	Lower Head Block
14	WFALS35-16	Water Fitting, Barbed, 16 mm
15	WFALS35-13	Water Fitting, Barbed, 13 mm

## FREQUENTLY USED CONSUMABLES:

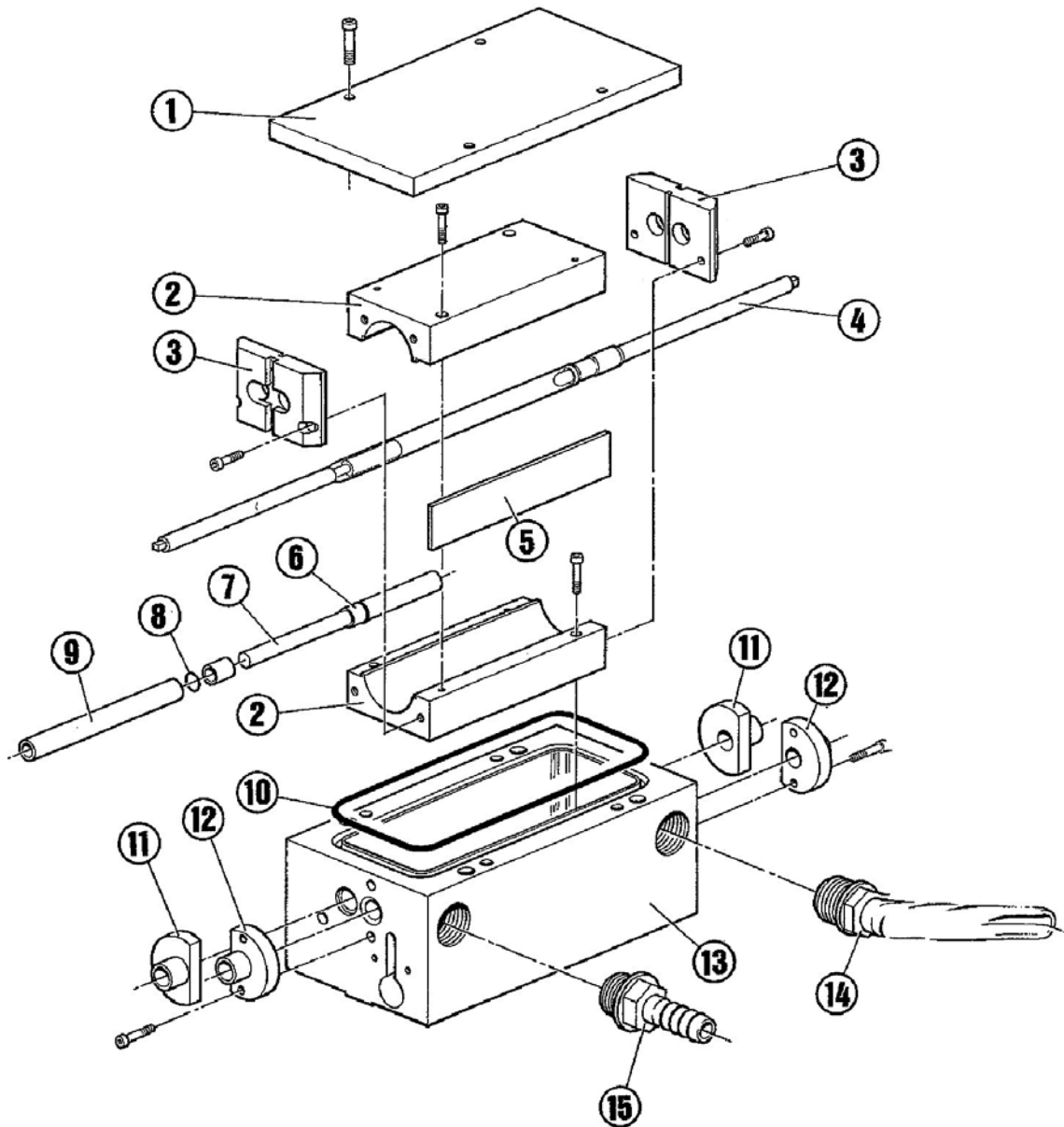
REFERENCE	ITEM	PART NUMBER
1	Lamp, Krypton	LLK394
2	Flow Plate	FGALS35SP
3	Front Mirror 35% R	MR17M35RHC
4	Rear Mirror HR	MR17M100RHC
5	Air Filter 170 × 133 × 120 mm	AFALS133
6	Air Filter 170 × 145 × 120 mm	AFALS145
7	DI Cartridge	D1008

Other consumables upon request.

# LAMP PUMPED LASER HEADS

High performance and reliability

## Part No: CHBAALS35S



Intelligent Solutions, Manufacturing & Development