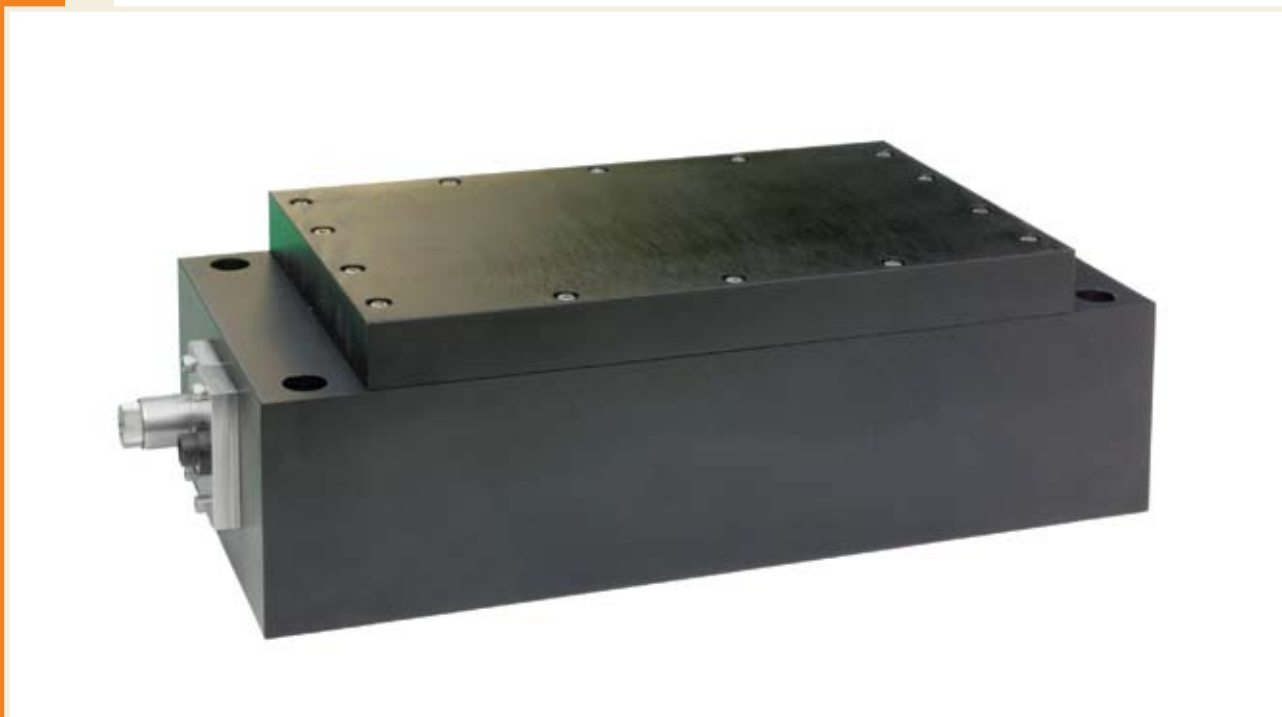


# LAMP PUMPED LASER HEADS

High performance and reliability



**Part No: CHBAMERLIN**

**LASER SYSTEMS:** Positive Light Merlin, Spectra Physics Merlin

**DESCRIPTION:** Single-Lamp Pumped YLF Solid-State Laser Chamber used for scientific applications.

## ASSEMBLIES:

REFERENCE	PART NUMBER	DESCRIPTION
1	ORKMERLIN	O-Ring Kit 4 mm Rod
2	GCAI 17	Gold Cavity Assembly, Complete
3	BAMERLIN	Head Block Assembly (Less Cavity Reflector, YLF Rod & Lamp Assembly)
4	HBAMERLIN	Head Block Assembly (Less YLF Rod & Lamp Assembly)
5	CHBAMERLIN	Head Block Assembly Complete (Includes 4 mm YLF Rod)

# Part No: CHBAMERLIN

## LASER HEAD COMPONENTS:

REFERENCE	PART NUMBER	DESCRIPTION
1	CHI17T	Cavity Reflector, Top
2	CHI17B	Cavity Reflector, Bottom
3	GCE117	Gold Cavity Reflector
4	WFMERLIN	Water Fitting
5	CEP114	Cavity End Plate, Gold
6	WIB117	Water Inlet Block
7	LSSMERLIN	Light Shield Sleeve
8	ORKMERLIN	O-Ring, Silicone
10	LHBMERLIN	Lower Head Block
11	RPPMERLIN	Rod Pressure Plate
12	LPPMERLIN	Lamp Pressure Plate, Front
14	LEPMERLIN	Lamp End Plate
16	UHBMERLIN	Upper Head Block
17	CCMERLIN	Upper Head Block Channel Cover
19	YLF4115	YLF Rod, 4 mm, Un-mounted
21	YLFA4115	YLF Rod Assembly, Complete
23	RFT117ENH	Rod Flow Tube
24	YRH4117ENH	YAG Rod Holder
27	PR117	Pressure Ring
28	RR117	Retaining Ring
29	CNI17ENH	Crystal Nut
30	ORS4MM	O-Ring Silicone, 4 mm
32	PT4117ENH	Pressure Tube
34	LFT117CE	Lamp Flow Tube, Cerium Doped Quartz
35	LHCMERLIN	Lower Head Carriage
36	LLQCW324	Laser Lamp
38	PW149	Pressure Washer
39	CSA116	Cathode and Anode Socket Assembly
41	ORN804	O-Ring Nitrile (10 Pieces/Package)
42	TRH150	Threaded Retainer

## FREQUENTLY USED CONSUMABLES:

REFERENCE	ITEM	PART NUMBER
1	Lamp	LLQCW324
2	Lamp Flow Tube	LFT117CE
3	O-Ring Kit	ORKMERLIN
4	Cathode and Anode Socket Assembly	CSA116
5	DI Cartridge	DMP10

Other consumables upon request.

# LAMP PUMPED LASER HEADS

High performance and reliability

## Part No: CHBAMERLIN

